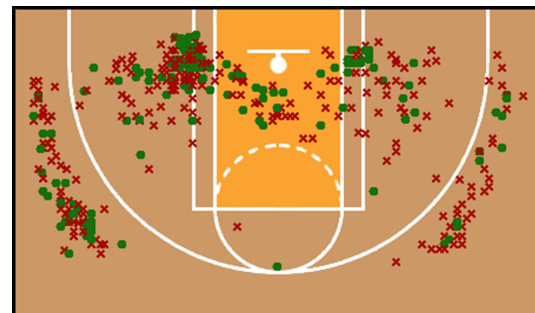


2009-10 Memphis Central

2 Whiteside, Aaliyah



Player	GP	MIN	FGM-A	3PM-A	FTM-A	REB-O	AST	STL	BLK	TO	PF	PTS
Totals	30	763	171-446	47-140	106-153	134-74	50	58	2	85	43	495
Average/Percentage		25.4	38.3 %	33.6 %	69.3 %	4.5-2.5	1.7	1.9	0.1	2.8	1.4	16.5

Date	Opponent	Result	MIN	PTS	REB	AST	STL	BLK	TO	PF	FG%	3P%	FT%
11/27/2009	@ Riverdale Baptist	L 74-60	* 32	8	0	3	2	0	3	2	30.8	0.0	0.0
11/28/2009	Potters House	W 71-70	* 32	21	4	2	0	0	7	4	69.2	200.0	50.0
12/4/2009	Bolton High School	W 67-47	* 32	20	2	6	5	1	6	1	55.6	25.0	69.2
12/5/2009	Riverdale High School	W 54-42	* 32	19	4	1	2	0	2	0	53.8	0.0	62.5
12/11/2009	Trezvent High School	W 80-38	* 9	15	3	6	3	0	0	1	53.8	25.0	0.0
12/12/2009	@ West Memphis	W 57-30	* 1	8	2	1	2	0	1	1	20.0	0.0	57.1
12/18/2009	@ H.D. Woodson	W 69-40	* 32	18	1	4	0	0	3	0	50.0	40.0	0.0
12/19/2009	@ St.Mary's	L 76-73	* 8	12	4	0	1	0	5	3	55.6	0.0	100.0
12/21/2009	MT. LEBANON	L 63-56	* 24	13	0	1	0	0	4	1	42.9	33.3	0.0
12/22/2009	Riverdale Baptist	W 58-52	* 32	20	2	0	2	0	1	0	23.5	33.3	69.2
1/12/2010	@ Whitehaven High	W 57-41	32	13	11	1	1	0	2	3	18.8	66.7	71.4
1/14/2010	@ Melrose High	W 49-36	* 24	16	4	0	2	1	0	1	31.2	20.0	83.3
1/15/2010	Hamilton High School	W 79-33	32	20	8	2	4	0	3	3	36.8	20.0	71.4
1/19/2010	EAST HIGH	W 71-50	* 24	21	7	1	4	0	3	2	34.8	25.0	57.1
1/22/2010	White Station High School	W 52-38	* 1	15	10	2	3	0	3	1	21.1	40.0	62.5
1/26/2010	@ Mitchell High	W 91-58	* 24	32	6	3	2	0	6	2	66.7	40.0	100.0
2/2/2010	@ Hamilton High School	W 90-50	* 32	15	5	5	3	0	6	2	36.4	33.3	85.7
2/3/2010	@ EAST HIGH	W 79-40	* 8	25	11	2	4	0	2	0	52.9	66.7	100.0
2/9/2010	Whitehaven High	W 53-34	* 24	10	7	0	0	0	5	1	38.5	0.0	0.0
2/12/2010	@ White Station High School	W 55-46	* 32	20	3	1	2	0	3	2	35.3	50.0	66.7
2/18/2010	Melrose High	W 58-36	* 32	11	10	2	0	0	3	0	45.5	50.0	0.0
2/18/2010	@ Overton	W 70-66	* 44	20	3	3	2	0	3	1	46.2	50.0	83.3
2/20/2010	Mitchell High	W 71-34	* 24	13	3	0	1	0	2	3	55.6	60.0	0.0
2/23/2010	White Station High School	W 72-45	* 24	18	6	0	4	0	4	1	57.1	25.0	50.0
2/26/2010	Germantown High	W 67-57	* 24	29	1	1	3	0	1	0	43.5	54.5	75.0
3/1/2010	Ridgeway High	W 67-65	* 32	20	6	1	1	0	2	0	19.2	20.0	72.7
3/3/2010	Overton	W 58-51	* 32	11	6	1	0	0	0	1	33.3	0.0	71.4
3/6/2010	Jackson Northside	W 59-56	* 32	10	2	0	1	0	0	0	23.1	25.0	100.0
3/11/2010	@ CLARKSVILLE	W 55-50	* 16	8	1	0	2	0	3	3	18.2	25.0	50.0
3/12/2010	@ Morristown-Hamblen	L 59-51	* 36	14	2	1	2	0	2	4	19.0	22.2	57.1

(\* denotes starter)